

The American Thyroid Association

Membership Meeting

9/14/10

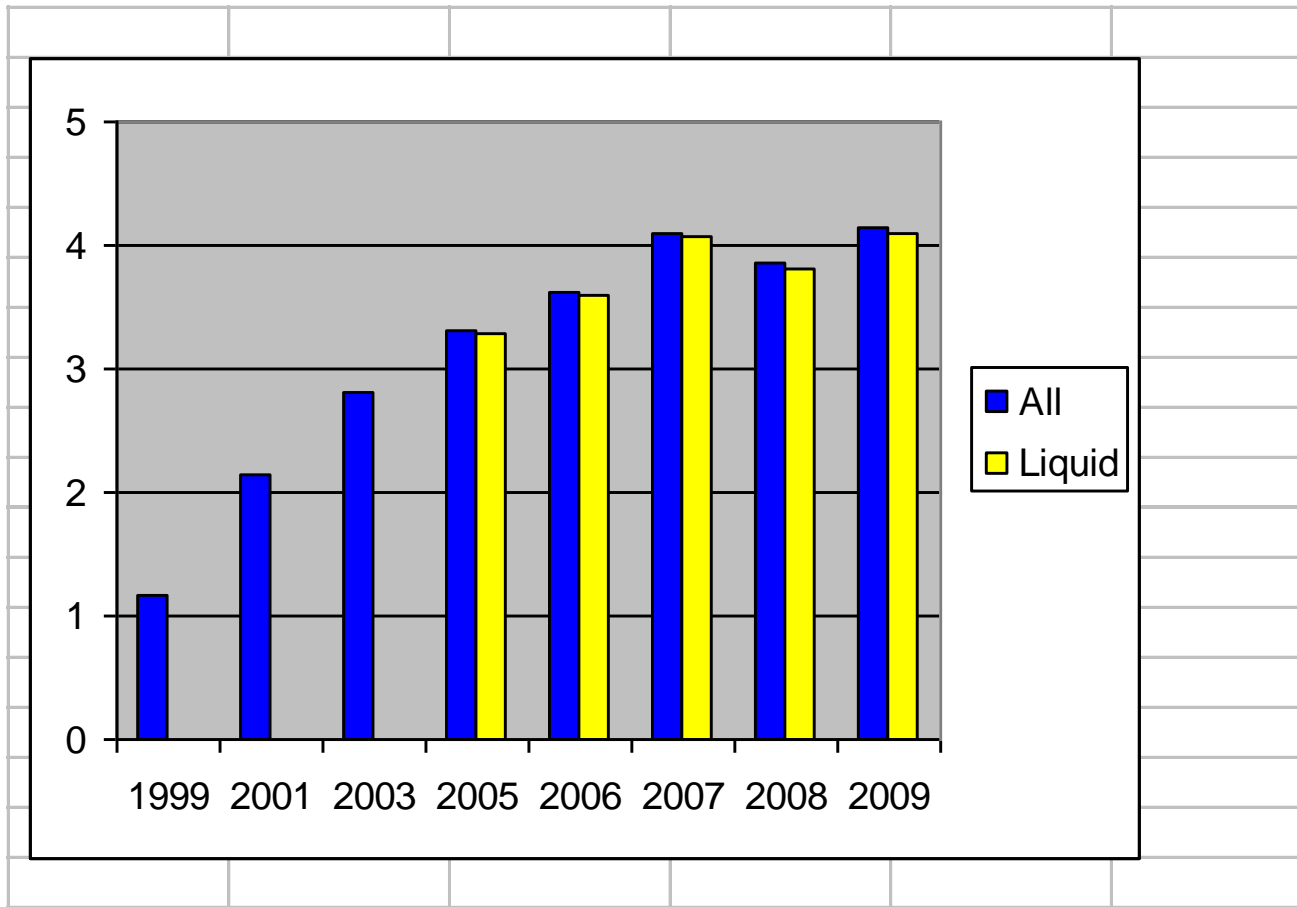
Treasurer's Report





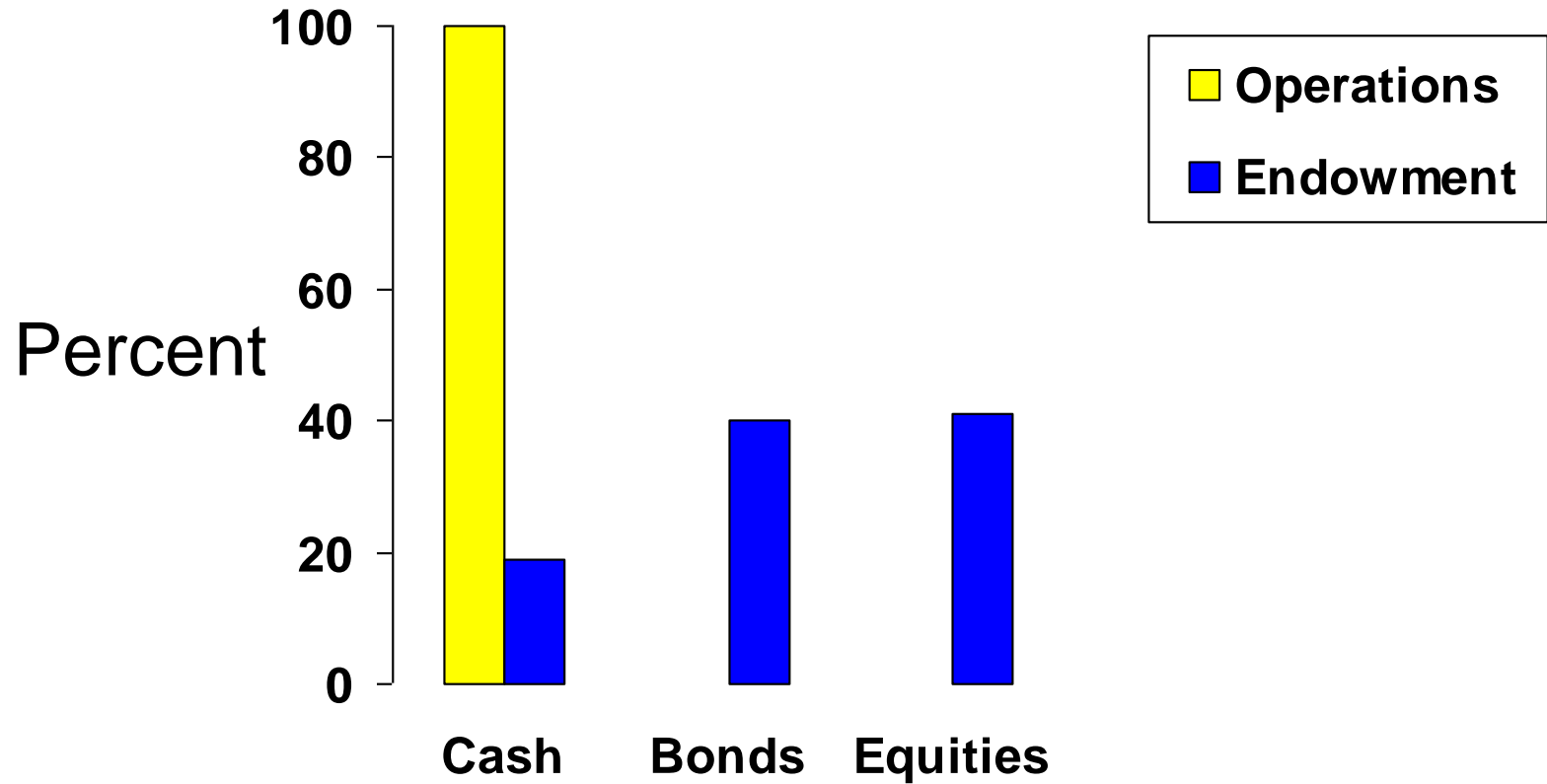
Assets of The American Thyroid Association

Dollars,
(Millions)

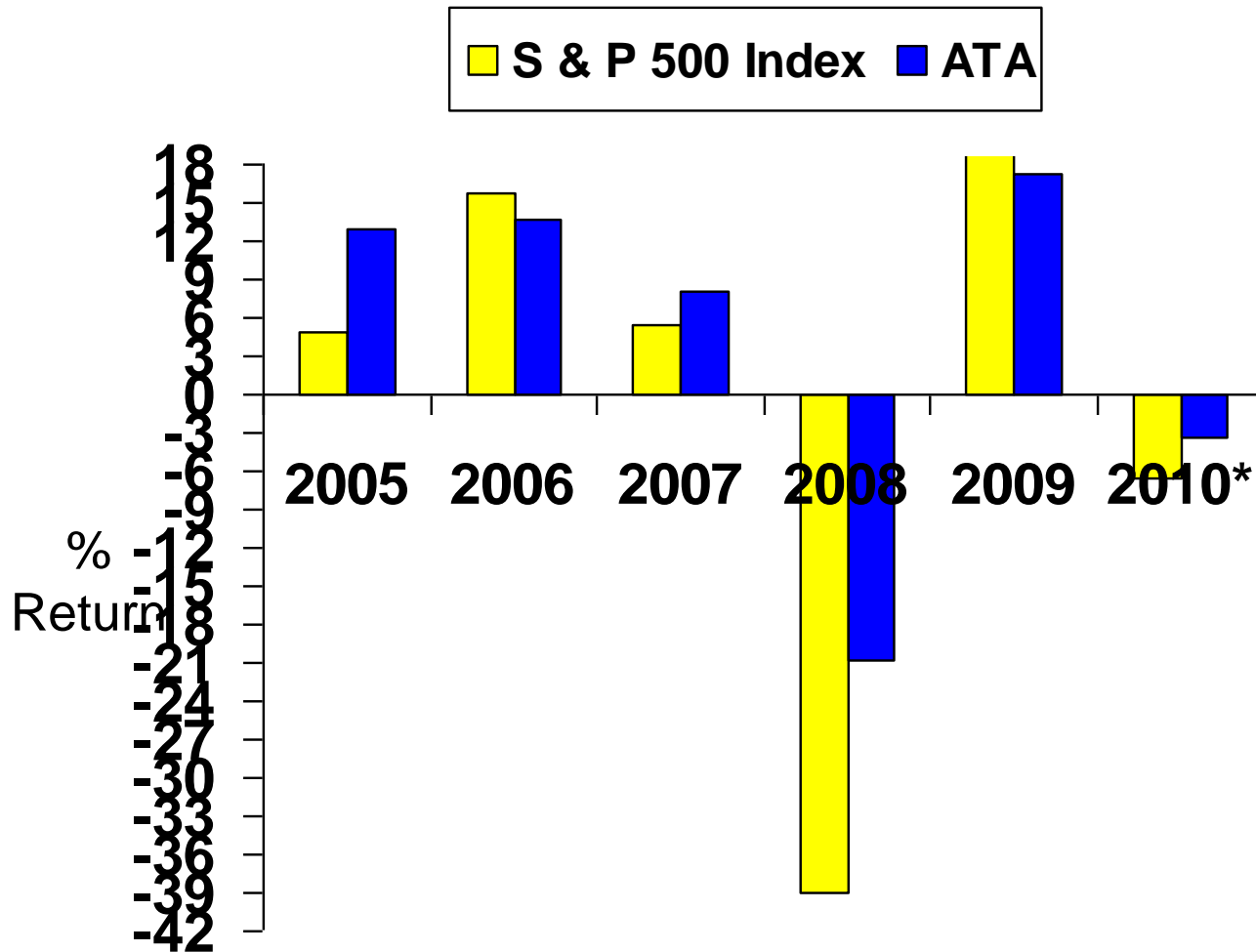


ATA Monetary Assets

Fund Allocation 6/30/10

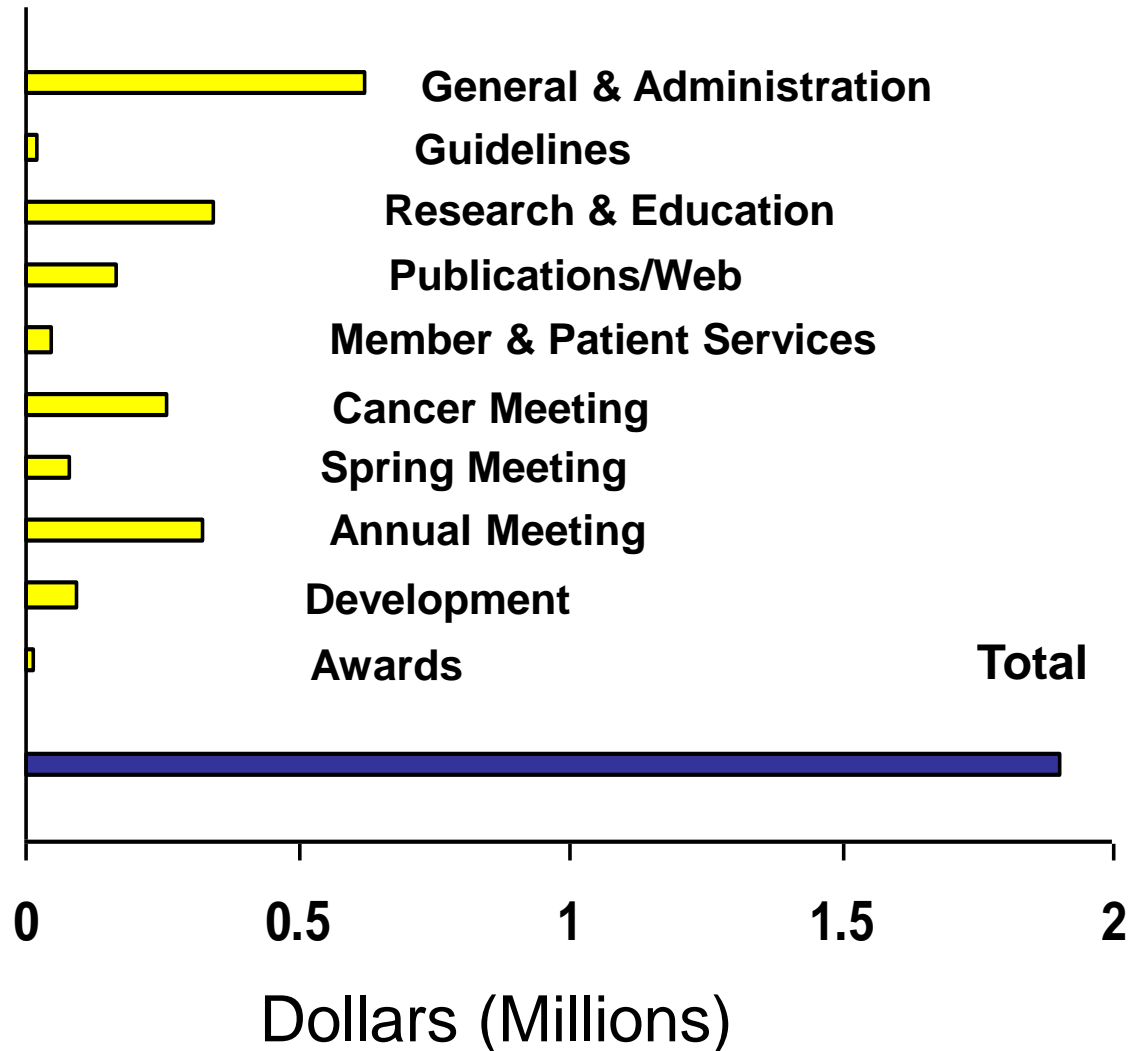


ATA Investment Results

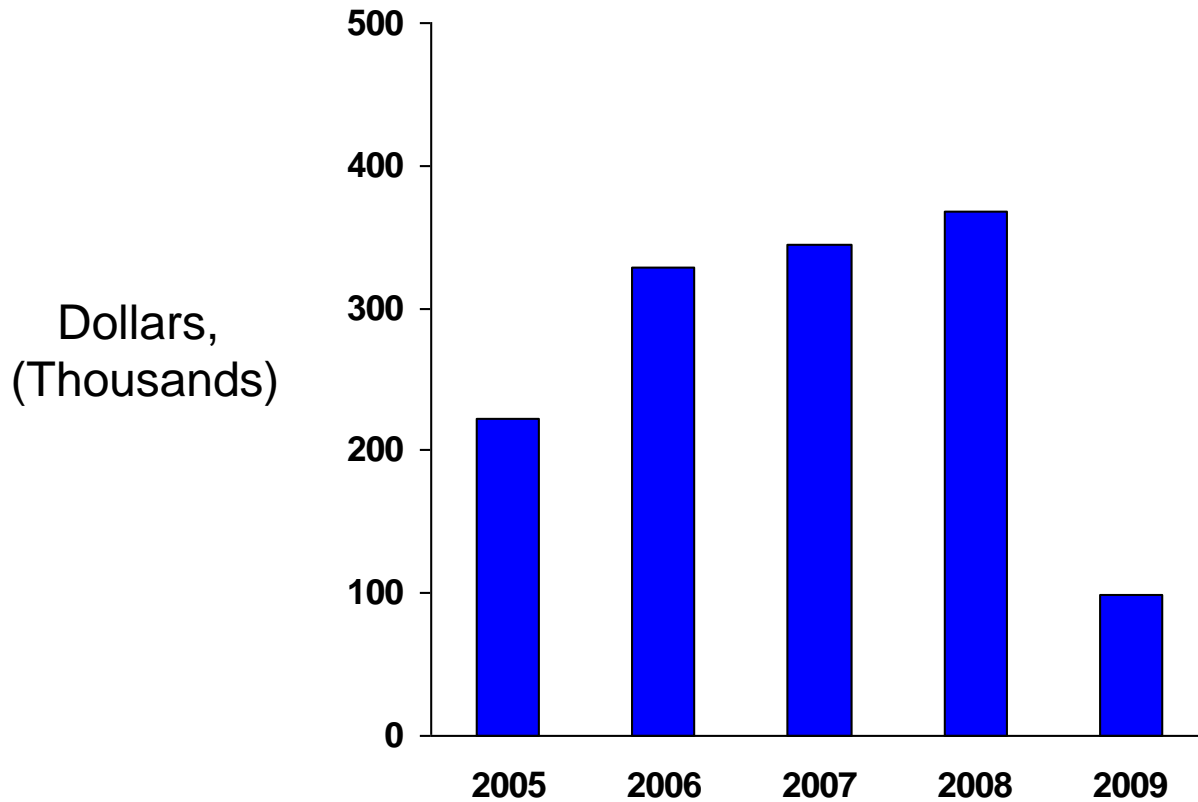


•Jan-Jun, 2010

2009 Expenditures



Support and Revenue in Excess of Expenses



Anticipated Loss for 2010

Non-Annual Meeting Year



- **Ongoing review of costs and benefits**
 - Avoid increases in meeting registration fees
 - Minimize increases in annual dues
 - Elimination of streaming video
 - Elimination of Meet the Professor lunches

Services and Activities of the ATA

Research Grants

Guidelines

Publications

Thyroid

Clinical Thyroidology

Clinical Thyroidology for Patients

Education

Public Policy

Challenges

- To maintain and expand
 - Patient and educational services
 - Research support
 - Guideline development
- Need increased financial support
 - Reduction in Industry Support
 - Need new revenue sources
 - Need increased contributions
 - Need a larger endowment

Visa® Platinum credit card through Capital One Card Lab Connect



Visa® Platinum credit card through Capital One Card Lab Connect



Use it Once – ATA Receives \$50 from Capital One

Each Use – ATA receives 1-2%

NO FEES FOR FOREIGN TRANSACTIONS

Respectfully Submitted

David H. Sarne, MD

My thanks to Shirlyn Barger and Bobbi Smith for their help in preparing this report and their assistance throughout the year as well as to Rick Kloos and the Finance and Audit committee.