

# The American Thyroid Association

Membership Meeting

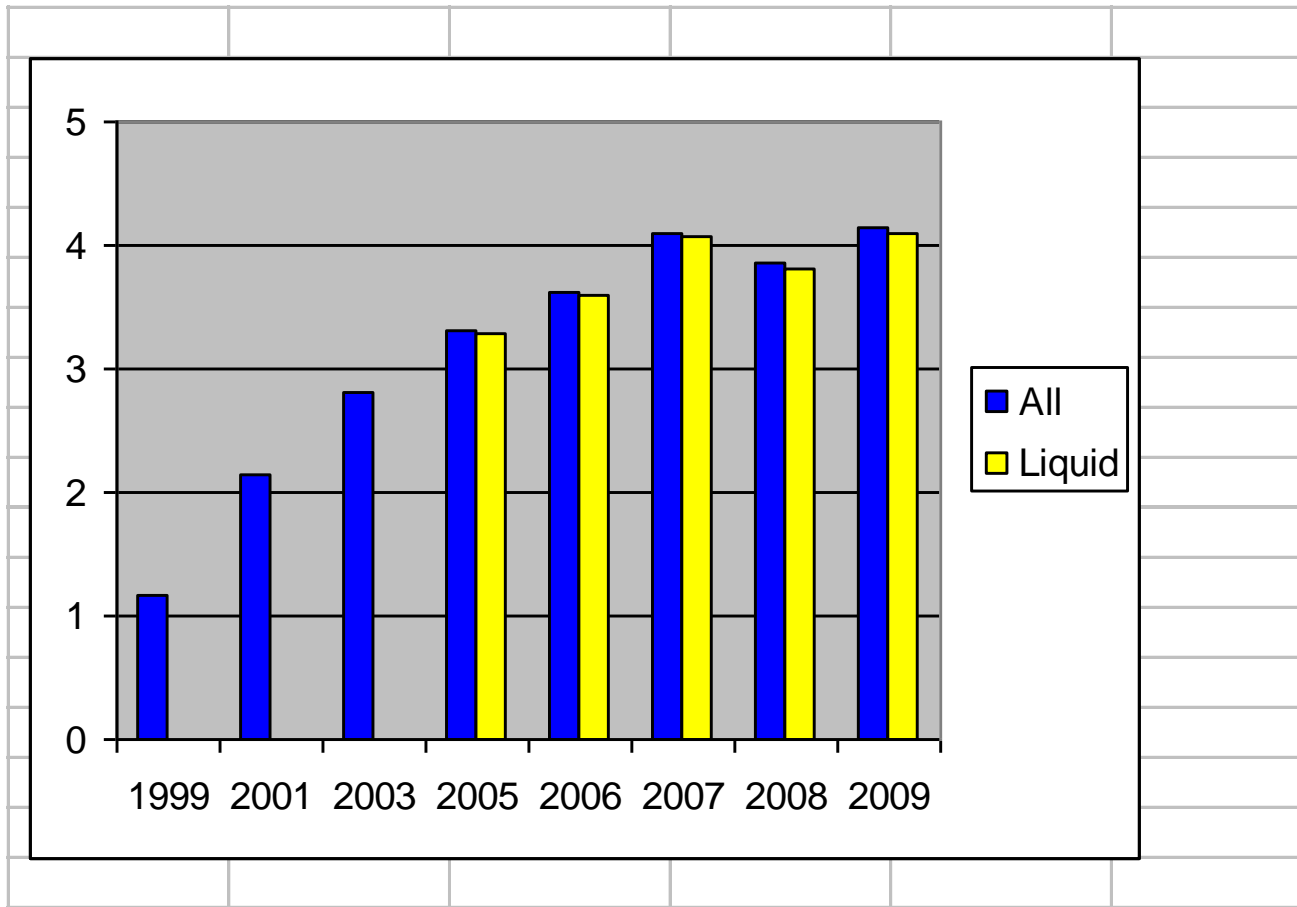
5/14/2010

## Treasurer's Report



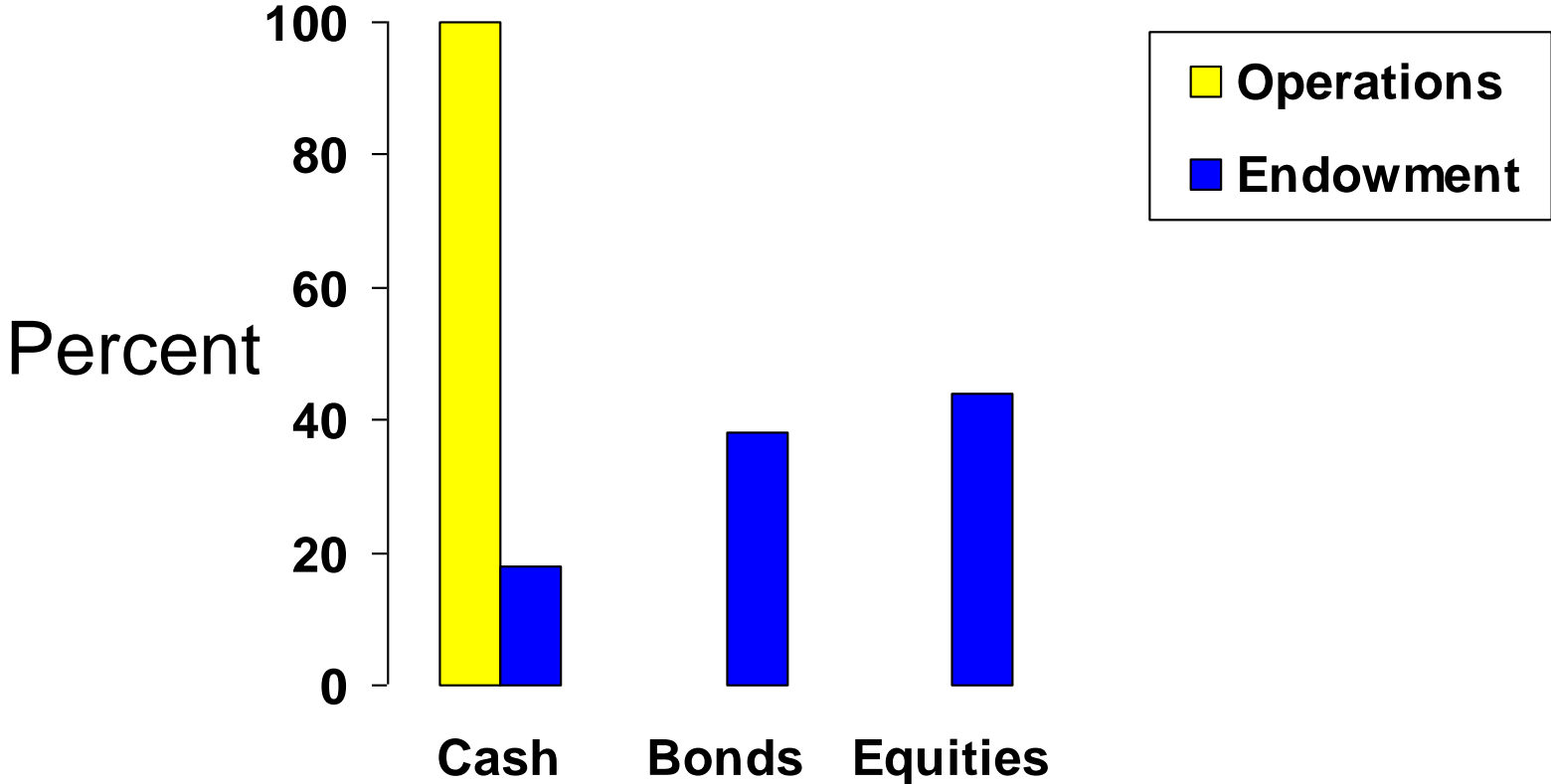
# Assets of The American Thyroid Association

Dollars,  
(Millions)

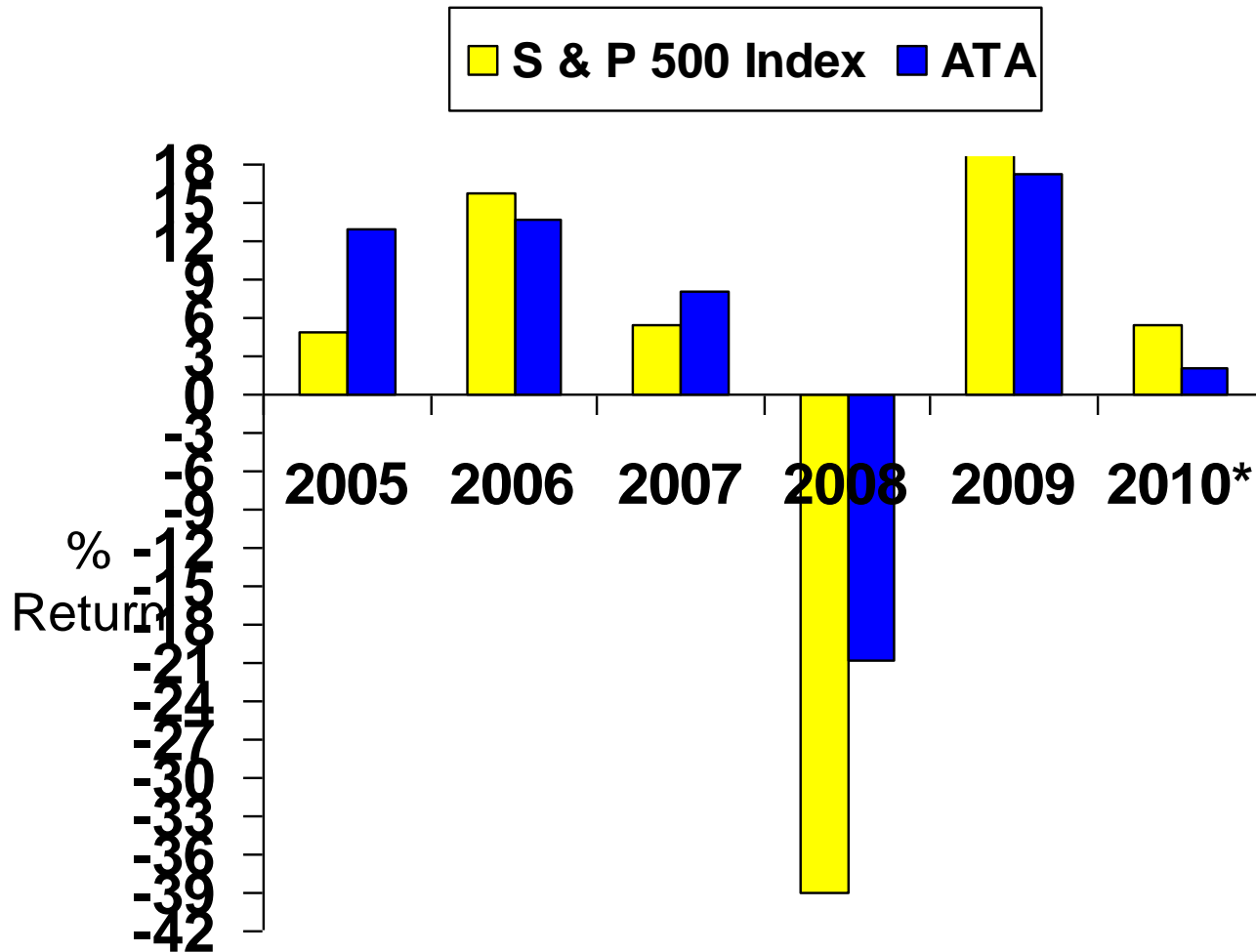


# ATA Monetary Assets

Fund Allocation 3/30/10

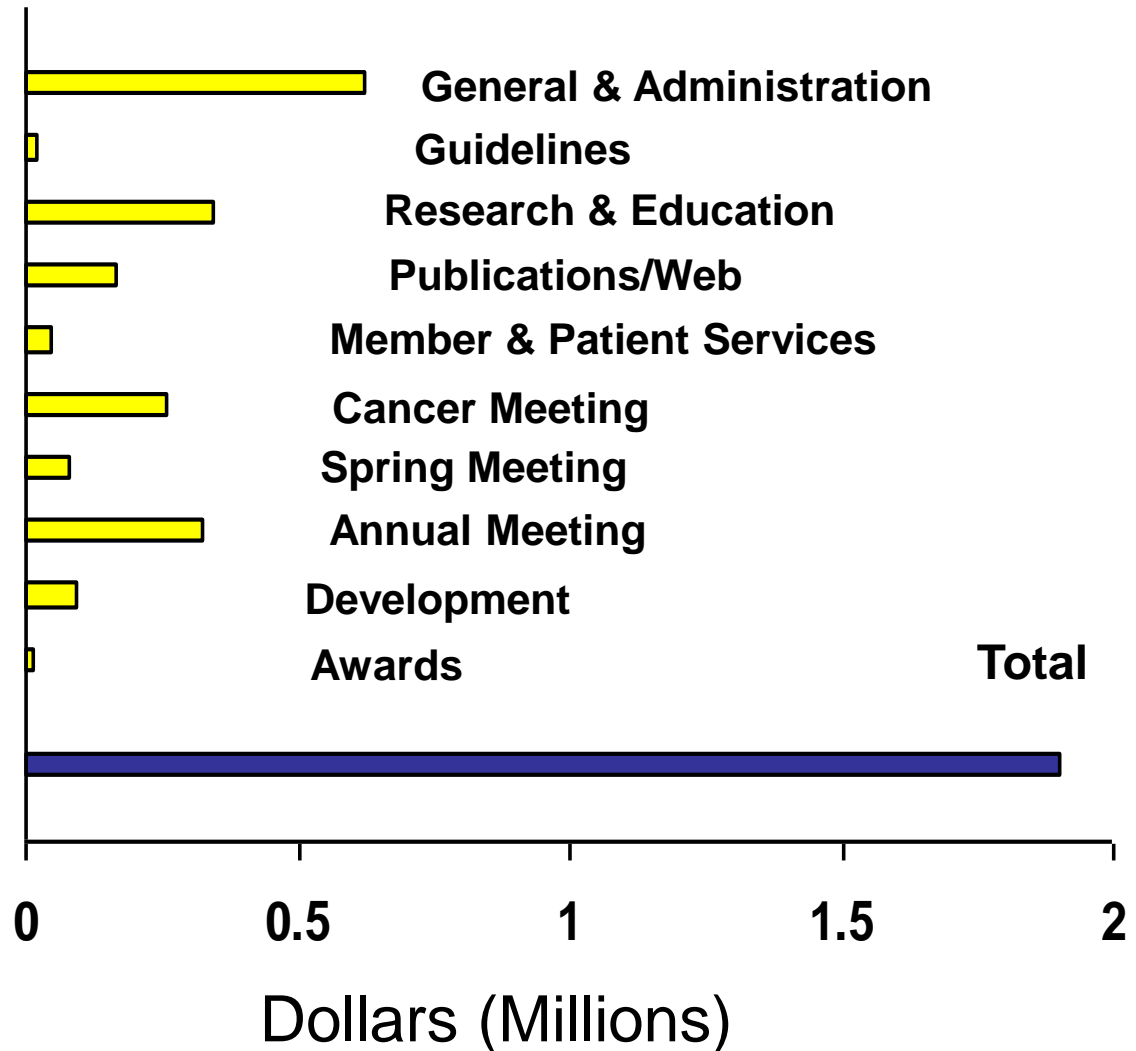


# ATA Investment Results

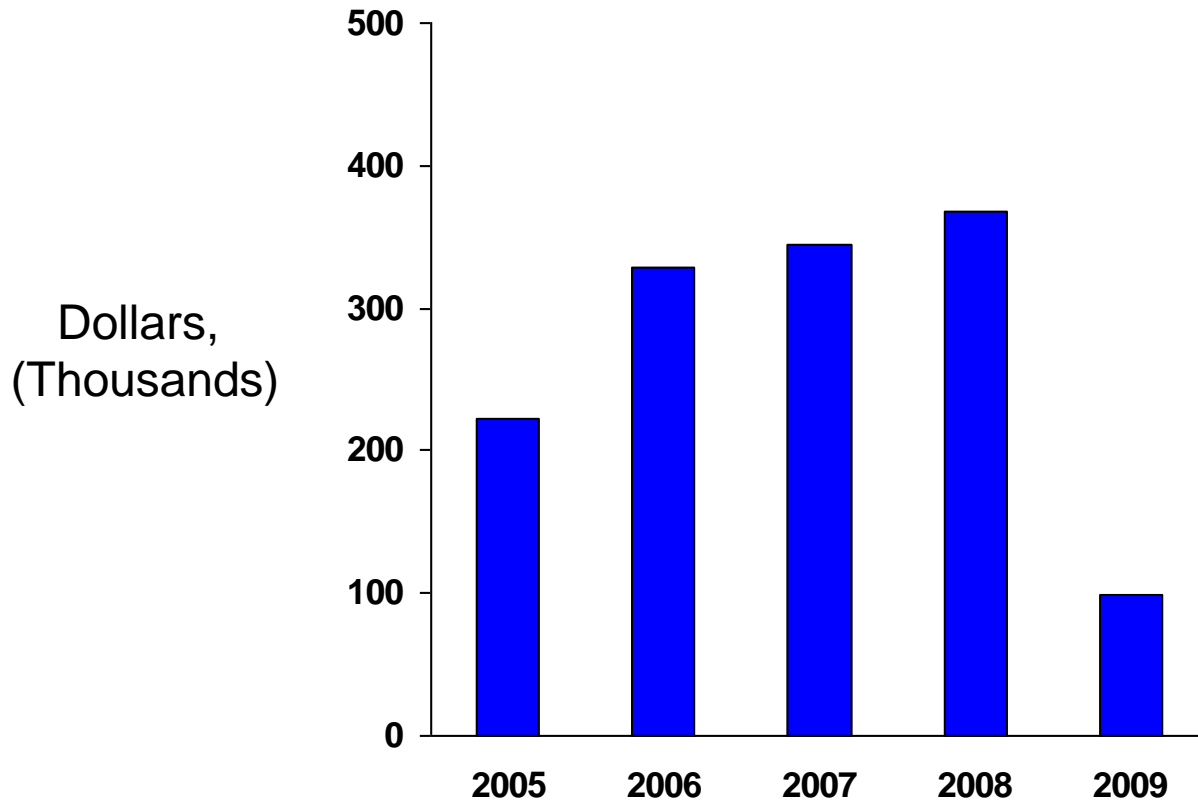


•Jan-Mar, 2010

# 2009 Expenditures



# Support and Revenue in Excess of Expenses



# **Anticipated Loss for 2010**

Non-Annual Meeting Year

Low Attendance

Penalty for not filling room block in  
Minneapolis?



- **Ongoing review of costs and benefits**
  - Increase in meeting registration fees
  - Increase in annual dues
  - Elimination of streaming video
  - Elimination of Meet the Professor lunches
  - Elimination of Winter Board meeting

# **Services and Activities of the ATA**

Research Grants

Guidelines

Publications

Thyroid

Clinical Thyroidology

Clinical Thyroidology for Patients

Education

Public Policy

# Challenges

- To maintain and expand
  - Patient and educational services
  - Research support
  - Guideline development
- Need increased financial support
  - Reduction in Industry Support
  - Need new revenue sources
  - Need increased contributions
  - Need a larger endowment

Visa® Platinum credit card through Capital One Card Lab Connect



Visa® Platinum credit card through Capital One Card Lab Connect



Use it Once – ATA Receives \$50 from Capital One

Each Use – ATA receives 1-2%

**NO FEES FOR FOREIGN TRANSACTIONS**

# Respectfully Submitted

## David H. Sarne, MD

My thanks to Shirlyn Barger and Bobbi Smith for their help in preparing this report and their assistance throughout the year as well as to Rick Kloos and the Finance and Audit committee.